



PROFOIL TABLE-TESTING I N S T R U C T I O N S

Overview

Congratulations on purchasing your very own PROFoil! This document will instruct you on how to properly table-test your PROFoil product.

If at any point you are unsure of how to proceed, or believe that a component was not sent to you, please contact us immediately for additional assistance.

The procedure for how to properly table-test your new PROFoil can be summarized in a few easy steps:

1. Lay your PROFoil on a table or other hard surface.
2. Connect the PCB Controller Board to your PROFoil.
3. Connect your PROFoil to your computer via USB cable.
4. Run your driver software and perform the wire test.
5. Disconnect electronics and prepare for application.

These steps are detailed further below, and will only use the same materials and components that were shipped with your PROFoil.

Note: Table-testing your PROFoil product prior to installation is required for full warranty to take effect.

Table of Contents:

Preparing Your PROFoil for Table-Testing.....	3
Testing Your PROFoil.....	4
Warranty Information.....	5

Section 1: Preparing Your PROFoil for Table-Testing

1. Lay your PROFoil product completely flat on a table or other hard, non-electronic surface.
 - In order to properly table-test, you will want to minimize any electronic interference.
2. Attach your PCB Controller Board to your PROFoil tabs by making sure the orange stickers on the back of each are aligned and on the same side (usually the bottom side, see *Figures 1 - 2*).

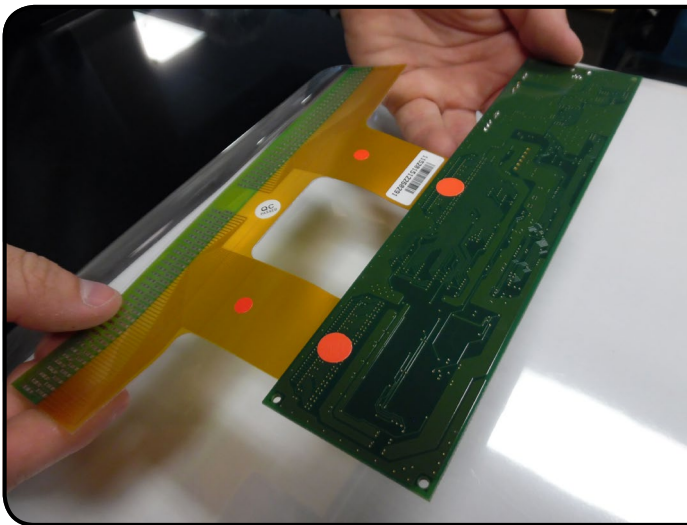


Figure 1

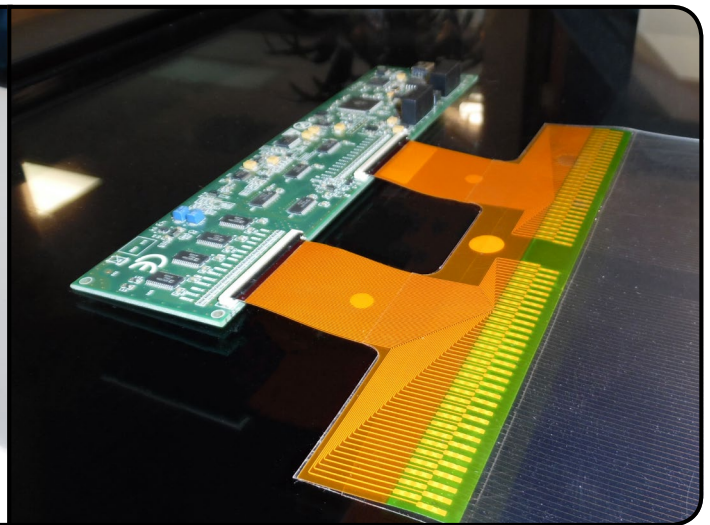
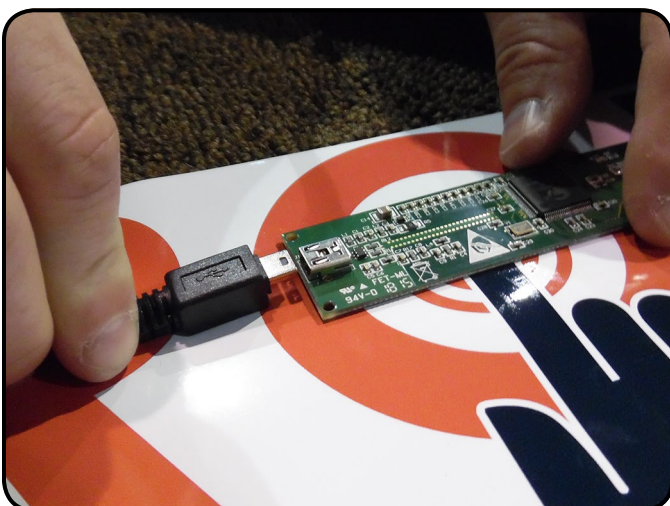


Figure 2

3. Connect the PCB Controller Board to your computer via the provided mini-USB cable.



4. [Download](#) and install the appropriate touch driver software for your PROFoil purchase and run the program.

- For software installation help, check out our [PROFoil Driver Installation & Calibration](#) help document.

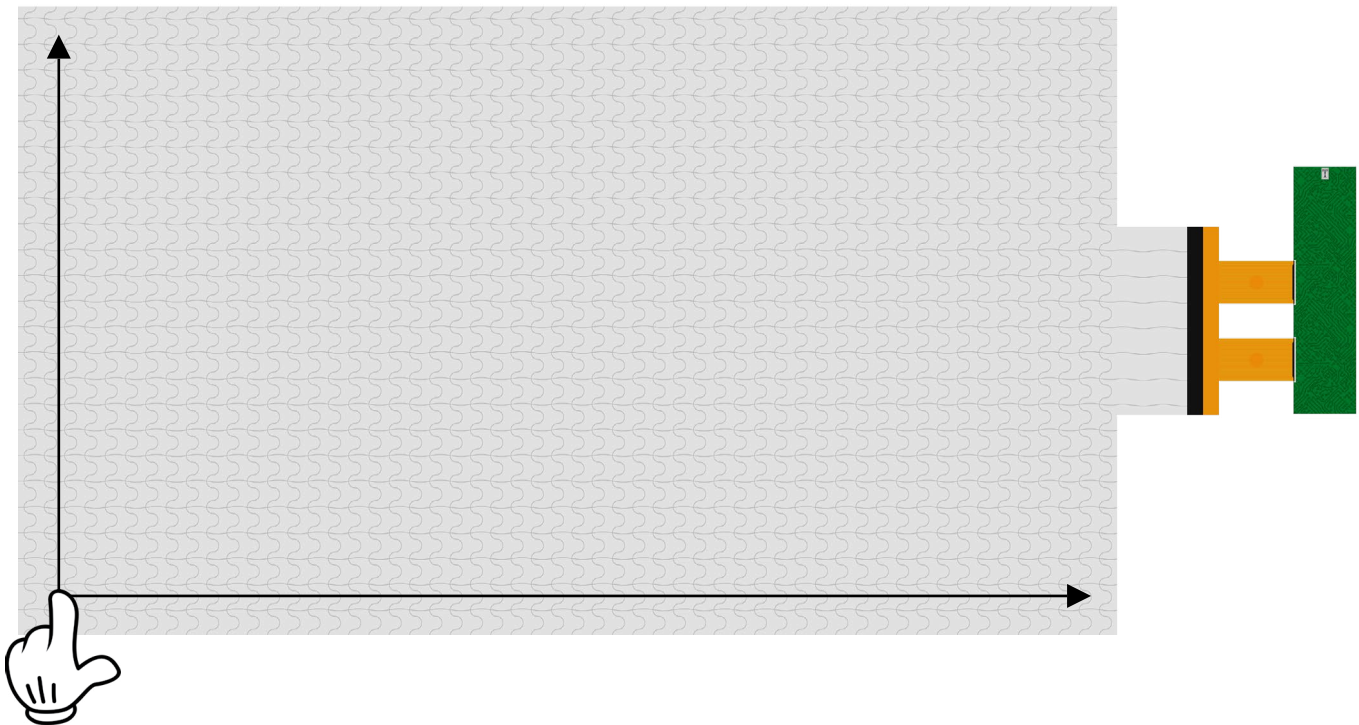
Section 2: Testing your PROFoil

1. Once your PROFoil is connected to your computer, select the “Graph” tab in the touch driver software to begin testing. Test your PROFoil by moving your finger horizontally and vertically across the surface of the foil.

- **Dual-Touch:** You should see all of the red lines on the Graph respond to your touch as you move across the surface of the foil.
- **Multi-Touch:** You should see a visual representation of your touch points responding as you touch and swipe across the surface of the foil. Check the entire foil and ensure that your foil/software is registering up to your max number of touch points (fingers).

Example

(Visual representation of a multi-touch, 4k PROFoil)



IMPORTANT: Remove all electronic components before applying to glass or other application surface. Application process requires water and moisture that can damage the expose electronics.

Screen Solutions International PROFoil Warranty Policy:

Screen Solutions International PROFoils are warranted to be free from defects and other faults for a period of one (1) year from the date of shipment.

Screen Solutions International will, at their discretion, repair or replace a faulty PROFoil if a fault is found during the warranty period.

Faults or damage to the PROFoil caused by negligence, lack of training, or malicious intent in any installation environment is specifically excluded from this warranty.

For repair charges outside warranty, please contact your sales representative for repair or replacement details on the following:

1. Cling Film
2. PROFoil Interactive Touch Film
3. USB Cable
4. PCB Controller Board

Returns Procedure:

Where a PROFoil is returned for evaluation and repair, Screen Solutions International will prepare a report on the faults within the PROFoils and clarify if it is deemed to be repairable or not.

Any shipping charges during the warranty are the responsibility of the reseller.

Screen Solutions International
www.profoils.com

269 Technology Way, Suite 1
Rocklin, CA 95765
Phone: (888) 631-5880
FAX: (866) 519-5149
info@touchfoil.us

CONGRATULATIONS!

Now that you have successfully table-tested your PROFoil, you are ready to take the next step toward a functional, interactive display! To properly apply your PROFoil to your glass or other application surface, download our PROFoil Application Instructions PDF at:

<http://www.profoils.com/support/>

Video tutorials are available at the link above.



PROFoil - Interactive Touch Film

269 Technology Way, Suite 1
Rocklin, CA 95765

(888) 631-5880

info@touchfoil.us