



PROFOIL APPLICATION I N S T R U C T I O N S

video instructions can be located at:
www.profoils.com/support/

Overview

Congratulations on purchasing your very own PROFoil! This document will instruct you on how to properly install your PROFoil product.

If at any point you are unsure of how to proceed, or believe that a component was not sent to you, please contact us immediately for additional assistance.

The procedure for how to properly install your new PROFoil can be summarized in three easy steps:

1. The installation area is marked, and cling film is applied to the marked area.
 - (Cling film will not be needed if your PROFoil installation is meant to be permanent.)
2. PROFoil interactive touch film is applied to the marked area.
3. The electronic components are attached and connected.

These steps are detailed further below, and will only use the same materials and components that were shipped with your PROFoil.

Table of Contents:

| | |
|--|----|
| Important Information..... | 3 |
| Marking the Installation Area and Applying Cling Film..... | 4 |
| Applying the Interactive PROFoil..... | 5 |
| Attaching the Electronic Components..... | 7 |
| Disclaimer..... | 9 |
| Warranty Policy Information..... | 10 |

Before beginning the installation process, we advise that you remember a few important details:

- The interactive PROFoil must be handled carefully to avoid creasing or tearing. Rippling may occur during the delivery of the foil, but this will disappear during the application process.
- Always lay the PROFoil on a soft, scratch-free surface whenever possible.
- A soft, lint-free cloth should be used if the PROFoil requires cleaning. Always clean from the center of the foil and out to the edges.
- It can take two to three (2-3) days for the water used in the installation process to fully evaporate. The water will appear as misty areas over the foil's surface until they have cleared. These misty areas will not affect the PROFoil's ability to remain in place.
- If you are applying a holographic projection film onto the back of your PROFoil, then you must substitute water with a suitable application fluid.
- We highly recommend that the PROFoil be table-tested prior to installation. *Any warranty for the foil is rendered null and void if it is not tested on-site before being installed.*
- For large units above 40", it is advisable to have two people available for the installation.

Keeping these important details in mind will make your installation go much smoother as you walk through the following steps.

Section 1: Marking the Installation Area and Applying Cling Film

NOTE: If you are planning on making your PROFoil installation permanent, please skip ahead to [Page 06](#).

1. Use tape or a highlighter to clearly mark the correct position for your PROFoil on the **outside** of your window (the viewable side).

- Doing this allows you to “frame” where your PROFoil will be applied.

2. Thoroughly clean the application surface (*opposite the viewing side*) of any dust, oils, or grease. Dirt and other contaminants will create pockets of air that undermine the seal of your cling film and/or PROFoil.

- Use of a glass cleaner and lint-free cloth is highly recommended prior to installing your PROFoil.

3. Apply a light mist of application fluid onto the marked area. This will aid you in positioning the cling film as well as smoothing out any pockets of air later during the installation.



Figure 1

4. Gently remove the cling film from the white backing. Be careful not to stretch or crease the cling film (**Figure 1**).

- If your PROFoil is meant to be permanent, skip to Section 2.

5. Place the top edge of the cling film into position on the glass. Slowly allow the whole film to gently wet onto the glass (**Figure 2**).

6. Apply a light mist of application fluid onto the back surface of the cling film.



Figure 2

7. Squeegee the excess fluid out from under the cling film. Start in the center of the film and push to the edges.

- If large bubbles are trapped, it may be necessary to lift the cling film off the application surface and re-smooth it.
- Remember to NOT let the surface of the film dry as you squeegee.

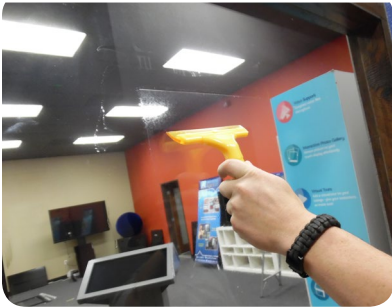


Figure 3

8. Slowly increase the squeegee pressure once you have removed the majority of the water from under the cling film.

9. Leave the cling film to dry for approximately 30 minutes before applying your PROFoil.

Section 2: Applying the Interactive PROFoil

Your new PROFoil can be mounted into any orientation. The following installation instructions assume that you will be mounting the electronic components at the bottom edge of the foil, and that your PROFoil materials have already been unpacked properly.

For instructions on how to properly unpack your PROFoil materials, please reference our PROFoil Unpacking Guide at <http://www.profoils.com/support/>

1. Apply a light mist of PROFoil Application Fluid using a sprayer onto the marked area or cling film.
2. Carefully align the top edge of the PROFoil approximately 2-3mm below the top edge of the cling film or marked area. Slowly, allow the PROFoil to adhere onto the cling film or application surface (**Figure 4-5**).

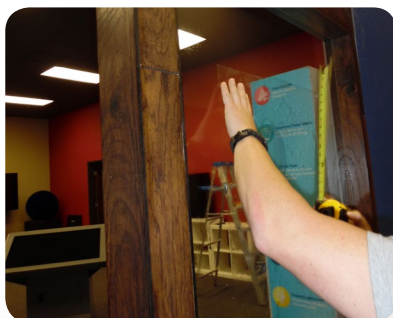


Figure 4



Figure 5

3. Using the squeegee, smooth out any pockets of air. Start from the center of the foil and work toward the edges.
4. If the PROFoil needs to be re-positioned, carefully lift a corner of the PROFoil to gently remove it. Then repeat the application process.

For Permanent Install: If you have chosen to do a permanent installation for your PROFoil, you will need to locate this tab and peel it off to reveal the PROFoil adhesive layer.

The side that the layer is removed from is the side that will be adhered to your application surface.



Figure 6

Follow the steps for [Section 2](#) after removing the adhesive release layer.

CAUTION: If water enters the electronics of the PROFoil during any stage of the installation, allow for a sufficient time to dry before attaching the electronic components.

Section 3: Attaching the Electronic Components

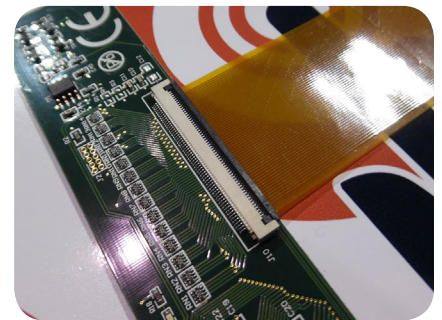
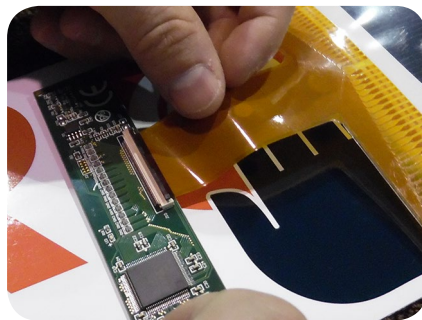
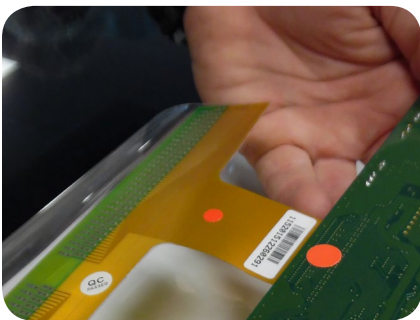
Once you have successfully applied your PROFoil, the final step is to connect the electronic components. Please note that the foil will need to have sufficiently dried and bonded to the application surface or cling film before moving onto the steps below. The extra weight of the electronic control board (PCB board) may cause the PROFoil to shift if it has not completely bonded to the application surface.

1. The PCB board for your PROFoil will come encased in a small, black cover. Make sure to keep this cover for use later on. On the PCB board, there will be a small clamping clip with a tab that can be lifted into an upright position. Lift the clamping clip into the upright position.

- Pro Touch 10, 20, and 40 boards will have two (2) clamping clips, and Pro Touch X foils will have three (3).

2. To attach the PCB board to the PROFoil, the orange ribbon cable, or “tail,” of the PROFoil must be inserted into the PCB board’s clamping clip.

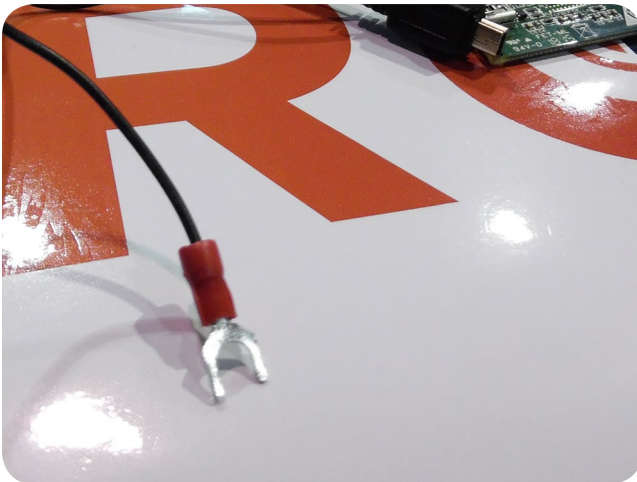
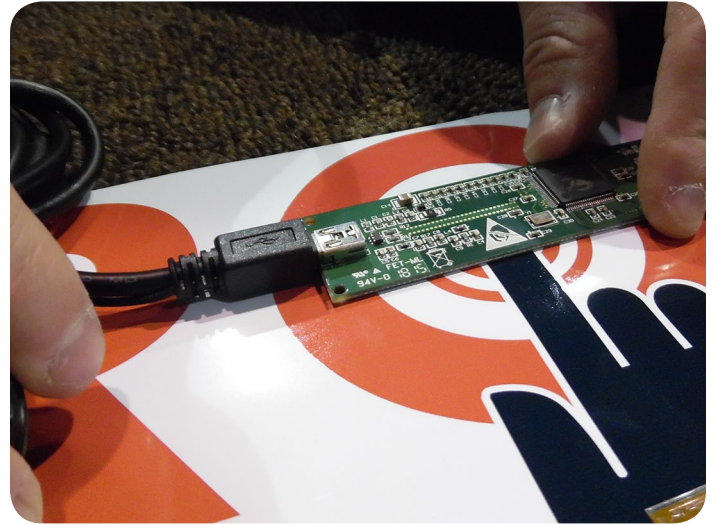
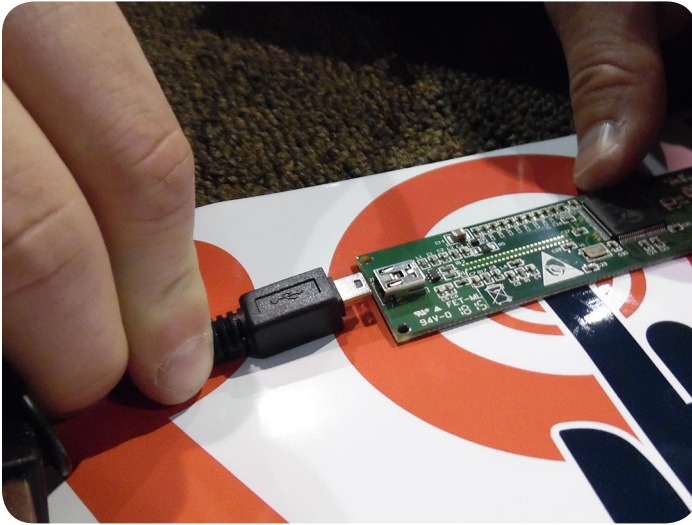
- On the underside of the tail **and** PCB board, you will find a red dot. These dots must be on the same side once the tail is attached for the foil to function properly.



3. Gently insert the tail of the PROFoil into the PCB board’s clamping clip. The tail will need to be pushed in until the darker, top-edge of the tail is completely inside the clamping clip. Once the tail’s top edge is fully enclosed, gently close the clamping clip onto the tail.

4. Take the black cover for your PCB board, and carefully slide the PCB board and connected tail into the cover. Make sure to open a slight gap in the cover, and to also avoid bumping the PCB board or tail as much as possible. Finally, make sure that the micro-USB port on the PCB board is accessible.

5. The next step will be to attach the micro-USB connector cable to the PCB board. This can be done by plugging the smaller end of the cable into the accessible port on your PCB board.



6. The last step will be to ground the unit's electrical signal. On the micro-USB connector cable, a ground wire with a red end will be attached.

Simply take the forked end of the wire and connect it to the LCD screen or nearby metal framework.

For additional information, visit our website at:

<http://www.profoils.com/>

or reach out to one of our representatives at:

888-631-5880

Disclaimer and Warranty Information to follow.

Disclaimer: It is the duty of the User to determine the suitability of the PROFoil Interactive Touch Film based on the User's intended purpose. In this application manual, only convenient recommendations and descriptions have been provided based on technical information and installation statements. Therefore, the accuracy of this information is not warranted.

The PROFoil Interactive Touch Film is not intended to be used for medical devices. The PROFoil Interactive Touch Film is warranted to meet its published specifications set from date of shipment. Any repairs, replacements, or refunds in the event of these specifications not being adhered to is at the discretion of Screen Solutions International. The specifications of the PROFoil Interactive Touch Film are subject to change without prior warning.

Screen Solutions International will not be held responsible for any product-related action resulting in loss or damages that are caused by misuse, modification, or subsequent manufacturing operations not performed by a Screen Solutions International employee. This instruction manual is subject to change without prior warning. Screen Solutions International shall not, in any event, be liable for economic, indirect, special, bodily, or consequential damages.

See Warranty Information on the following page.

Screen Solutions International PROFoil Warranty Policy:

Screen Solutions International PROFoilS are warranted to be free from defects and other faults for a period of one (1) year from the date of shipment.

Screen Solutions International will, at their discretion, repair or replace a faulty PROFoil if a fault is found during the warranty period.

Faults or damage to the PROFoil caused by negligence, lack of training, or malicious intent in any installation environment is specifically excluded from this warranty.

For repair charges outside warranty, please contact your sales representative for repair or replacement details on the following:

1. Cling Film
2. PROFoil Interactive Touch Film
3. USB Cable
4. PCB Controller Board

Returns Procedure:

Where a PROFoil is returned for evaluation and repair, Screen Solutions International will prepare a report on the faults within the PROFoilS and clarify if it is deemed to be repairable or not.

Any shipping charges during the warranty are the responsibility of the reseller.

Screen Solutions International
www.profoils.com

269 Technology Way, Suite 1
Rocklin, CA 95765
Phone: (888) 631-5880
FAX: (866) 519-5149
info@touchfoil.us

CONGRATULATIONS!

Now that you have successfully applied and connected your PROFoil, you are ready to take the next step toward a functional, interactive display! To properly install and calibrate our touch drivers, download our PROFoil Driver Installation & Calibration Instructions PDF at:

<http://www.profoils.com/support/>

Video tutorials are available at the link above.



PROFoil - Interactive Touch Film

269 Technology Way, Suite 1
Rocklin, CA 95765

(888) 631-5880

info@touchfoil.us