



# PROFOIL DRIVERS H A N D B O O K

## Overview

Congratulations on purchasing your very own PROFoil! This document will instruct you on how to properly install and calibrate your PROFoil's driver software. If at any point you are unsure of how to proceed, or believe that the wrong touch driver was sent to you, please contact us for additional assistance.

Before beginning the calibration process, there are a few important things to keep in mind. For your PROFoil, the calibration process will primarily address two factors: parallax and sensitivity.

**Parallax** can best be summarized as how an object's position seems to change depending on the angle it is viewed at. Since users of a PROFoil will be interacting with the display through another surface, such as glass, elements on screen may appear to be in a different place than they actually are.

This difference in perception can lead to touch inputs becoming less accurate, such as registering above, below, or to the side of where a user is placing their finger.

The touch software must take this difference into account by modifying the way it registers input. By calibrating your foil, the driver software is given a better idea of how to properly factor in the distance between a user and the foil. The more distance between the user and where the foil is located, the larger chance of parallax disrupting the user experience. A good example is how dual pane glass has a higher parallax factor than single pane glass.

**Sensitivity** is primarily measured by a setting called the “threshold.” This simply determines how hard a user needs to press on the surface before the PROFoil recognizes it as input. The lower a PROFoil’s threshold is, the easier it is for users to register input.

Having a very low threshold is not necessarily the best option. If a PROFoil’s threshold is too low, you may see random points of input on the screen called “ghost touches.” These inputs are due to the threshold allowing too light a touch to count as input, and can severely hamper the user experience.

Despite these two factors, our touch driver software comes equipped with a simple calibration tool that allows you to quickly account for any less than ideal environments. The instructions below will show you how to best utilize this tool.

## Table of Contents:

Overview.....	1
Installing the Driver Software.....	4
Calibrating the PROFoil.....	8

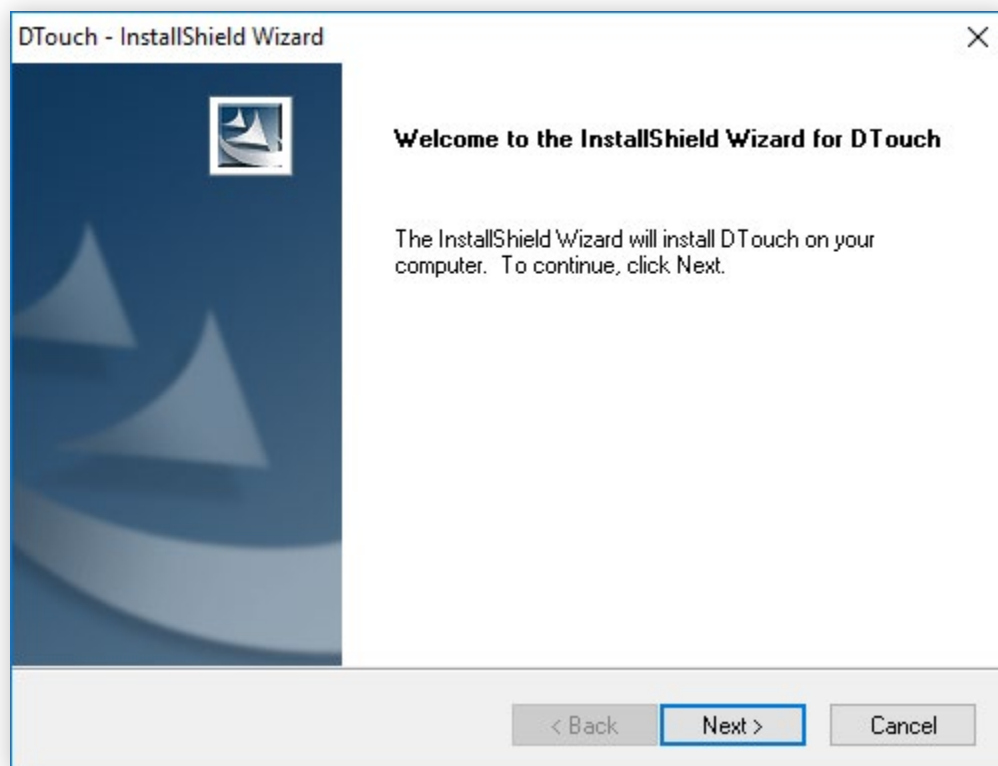
## Installing the Driver Software:

Before you can begin calibrating your PROFoil, you will need to install the driver software that controls it. If this software is not properly installed on your computer, the PROFoil will be unresponsive.

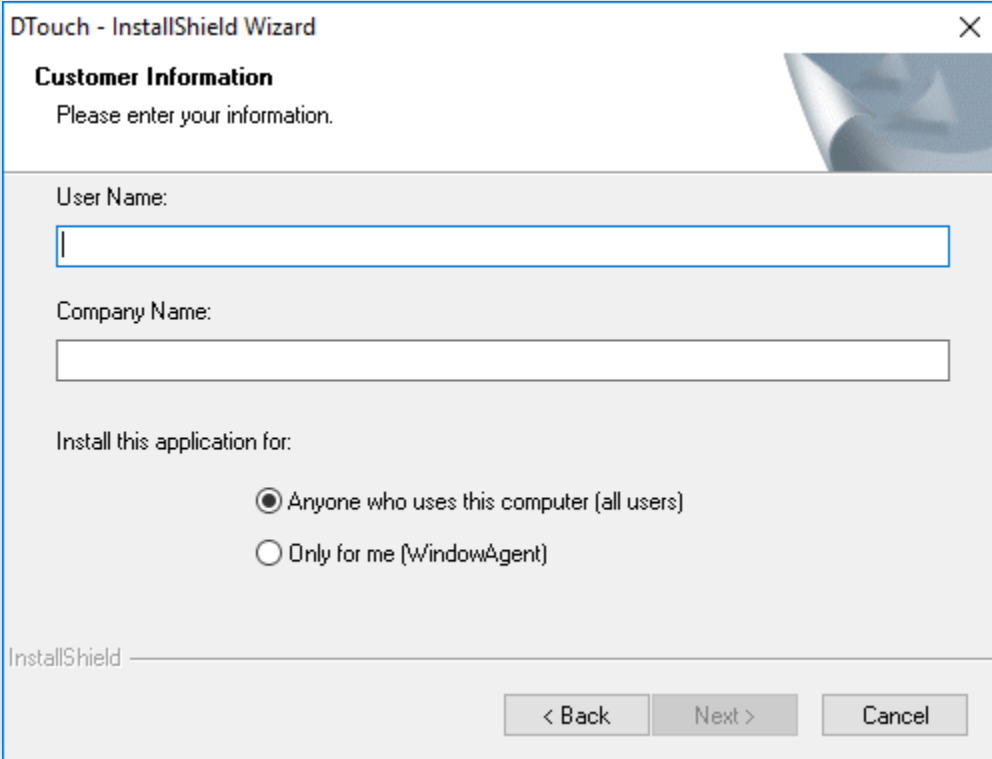
For the purpose of these instructions, we will be calibrating a PROFoil with the “DTouch” driver software. Depending on the type of PROFoil you have selected, the software given to you may be called “MTouch” if your foil requires a multi-touch foil driver. You can also locate the correct driver software at:

<http://www.profoils.com/downloads/>

1. Open the “DTouch” or “MTouch” driver installation file for your foil. Click “Next” to move on.
  - If your computer prompts you with a security warning, allow the program to run.

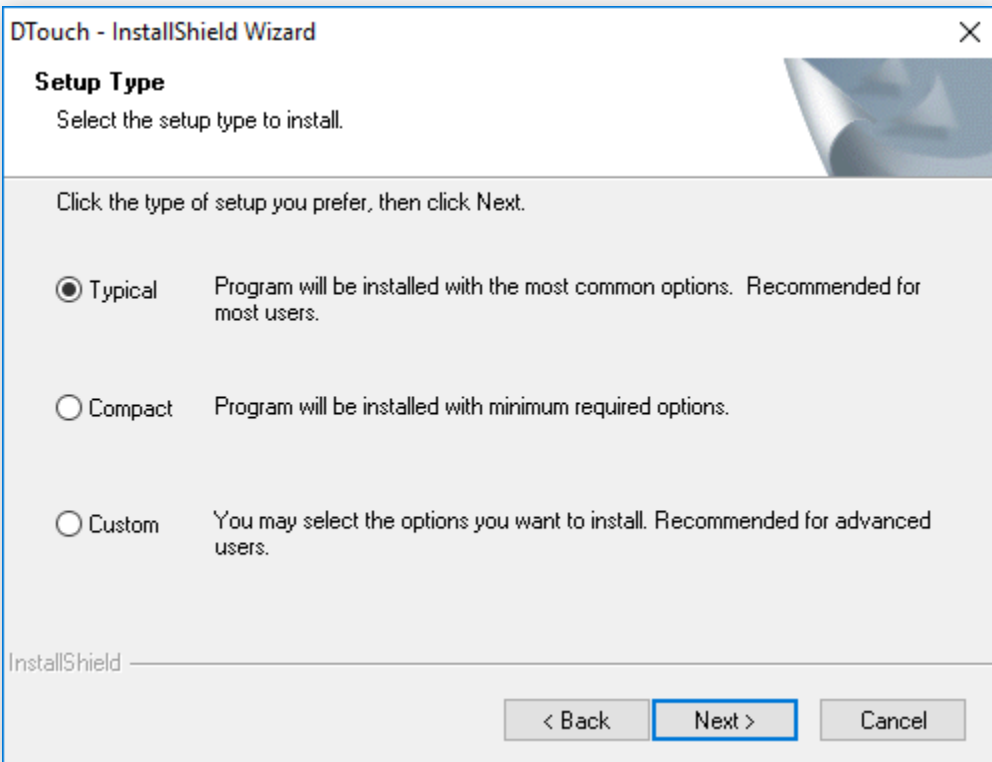


2. Enter the user name for your computer and the name of your company. Make sure that “Anyone who uses this computer (all users)” is checked. Click next when you are ready to move on.



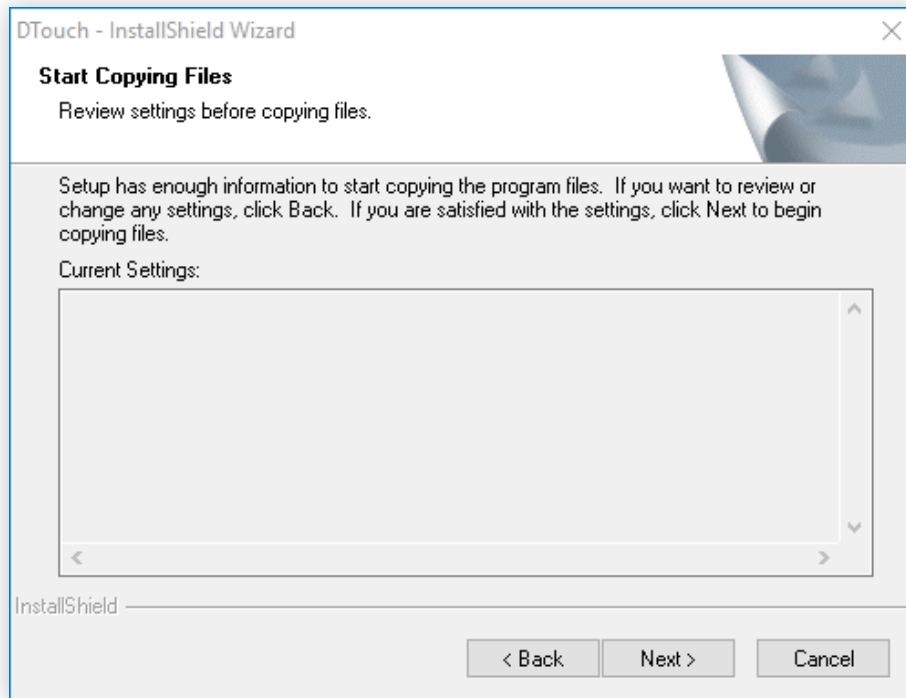
The screenshot shows the 'DTouch - InstallShield Wizard' window. The title bar includes the text 'DTouch - InstallShield Wizard' and a close button. The main heading is 'Customer Information' with the instruction 'Please enter your information.' Below this, there are two text input fields: 'User Name:' and 'Company Name:'. Underneath, the section 'Install this application for:' contains two radio button options: 'Anyone who uses this computer (all users)' (which is selected) and 'Only for me (WindowAgent)'. At the bottom, there are three buttons: '< Back', 'Next >', and 'Cancel'. The 'Next >' button is highlighted with a blue border. The 'InstallShield' logo is visible in the bottom left corner.

3. Select the “Typical” option on the “Setup Type” screen. Click next to move on.

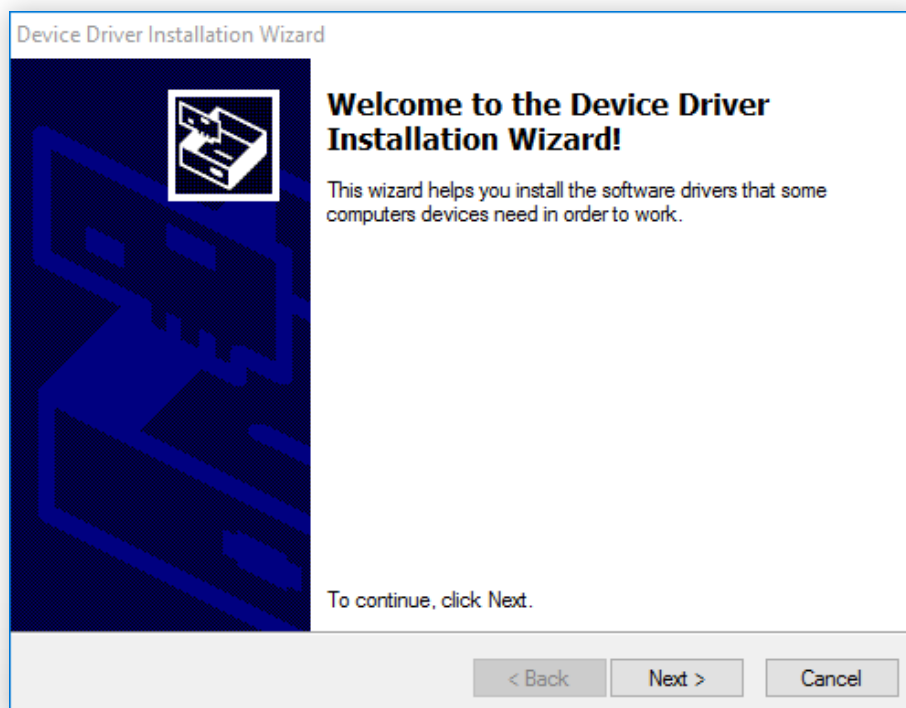


The screenshot shows the 'DTouch - InstallShield Wizard' window. The title bar includes the text 'DTouch - InstallShield Wizard' and a close button. The main heading is 'Setup Type' with the instruction 'Select the setup type to install.' Below this, there is a text prompt: 'Click the type of setup you prefer, then click Next.' There are three radio button options: 'Typical' (selected), 'Compact', and 'Custom'. Each option has a brief description: 'Typical' (Program will be installed with the most common options. Recommended for most users.), 'Compact' (Program will be installed with minimum required options.), and 'Custom' (You may select the options you want to install. Recommended for advanced users.). At the bottom, there are three buttons: '< Back', 'Next >', and 'Cancel'. The 'Next >' button is highlighted with a blue border. The 'InstallShield' logo is visible in the bottom left corner.

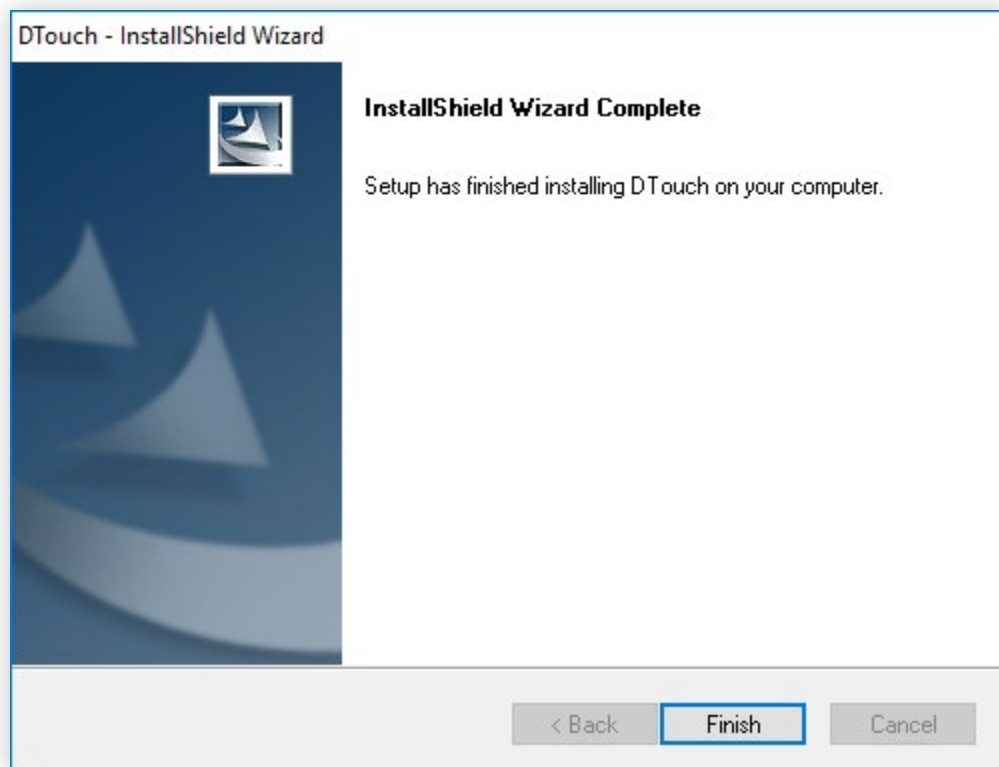
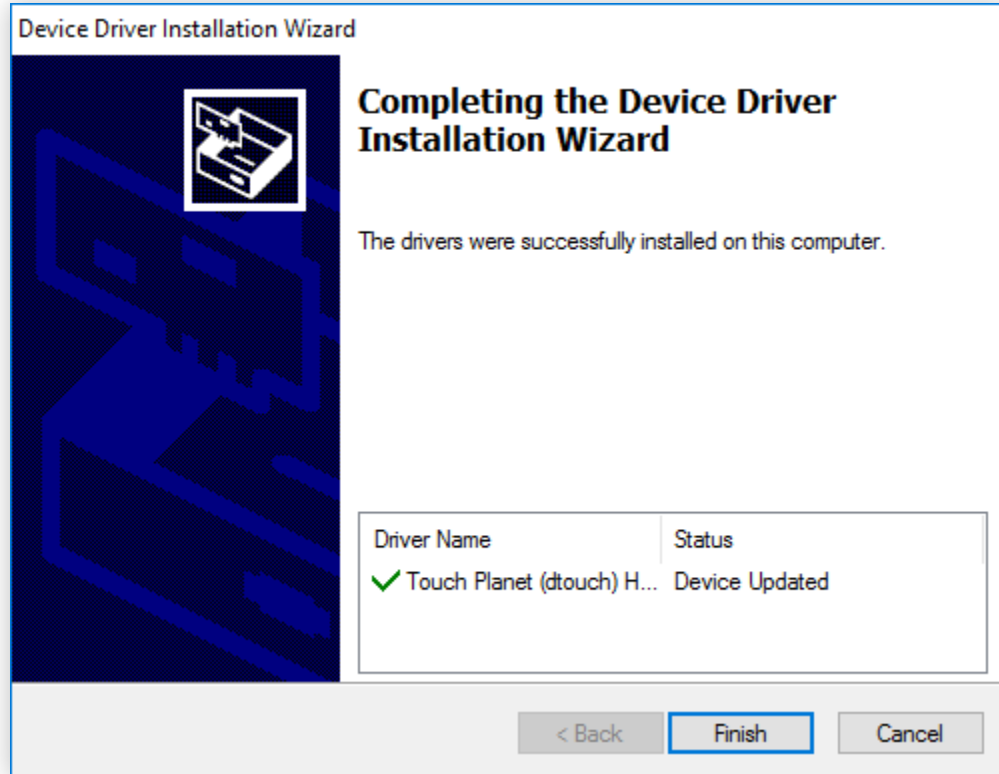
4. Make sure that your “*Current Settings*” field is blank. If this field is not blank, uninstall any previous touch drivers until your screen looks like the image below. Click next to move on.



5. You will be prompted to install a device driver as the installation finishes up. Allow the device driver installation wizard to continue.
  - If your computer prompts you with a security warning, allow the wizard to continue.



6. Click finish in both installation windows once they are done to create a desktop icon for the driver controller.



## Calibrating the PROFoil

Once the driver software has been fully installed, your PROFoil will be active and ready for calibration. Before beginning, ensure that your PROFoil's USB cable has been properly inserted into one of your computer's corresponding USB ports.

1. Open the driver controller by double-clicking the "DTouch/MTouch Controller" desktop icon.
2. In the controller window, check the "Enabled" box if it is not checked already. If the status for your foil is listed as "N/A", unplug your foil's USB cable and reconnect it after 5 seconds.
  - The USB symbol will be colored green if your foil is connecting properly.
3. Click the "Calibrate" button to begin the calibration tool.

*At this point, any future input will be done using the PROFoil. In order to properly account for parallax, the PROFoil will need to be calibrated in a simple, yet specific way. Before moving on to Step 4, please remember the following:*

*-When calibrating, **position yourself in front of the center** of the PROFoil. As you touch each calibration point, place your finger in the center of each circle by moving only your hand and arm.*

*-**DO NOT** move your entire body when touching each point! This will give the calibration tool faulty positional data, and may cause your PROFoil to register input inaccurately.*

4. As each calibration circle comes up on screen, press and hold your finger in the center of each circle. Keep your finger in that position until the circle becomes fully green and disappears. Repeat this as many times as necessary until the calibration window closes.



5. Once the calibration is finished, tap the “*Test*” button in the controller window. You will see a graphical display that shows how your PROFoil is picking up input.
  - The top graph represents the foil’s horizontal tracking. The bottom graph represents the foil’s vertical tracking.
6. Test the foil’s tracking as needed by moving your finger up, down, and side to side on a blank portion of the screen. If your foil is too sensitive or not sensitive enough, adjust the threshold setting near the top of the controller window.

After adjusting your threshold, you will have successfully finished setting up your PROFoil!

# CONGRATULATIONS!

Now that you have successfully installed and calibrated your PROFoil software, you should now have a fully functional interactive touch-screen display!

If you require any additional support, please visit us at:

<http://www.profoils.com/support/>



## **PROFoil - Interactive Touch Film**

269 Technology Way, Suite 1  
Rocklin, CA 95765

(888) 631-5880

info@touchfoil.us